



TECH*Ni***NINE**

SMB TECHNOLOGY USER GROUP

TECH*Ni***NINE**

SMB TECHNOLOGY USER GROUP

Erik Moreau

emo@aurelium.be

@ErikMoreau

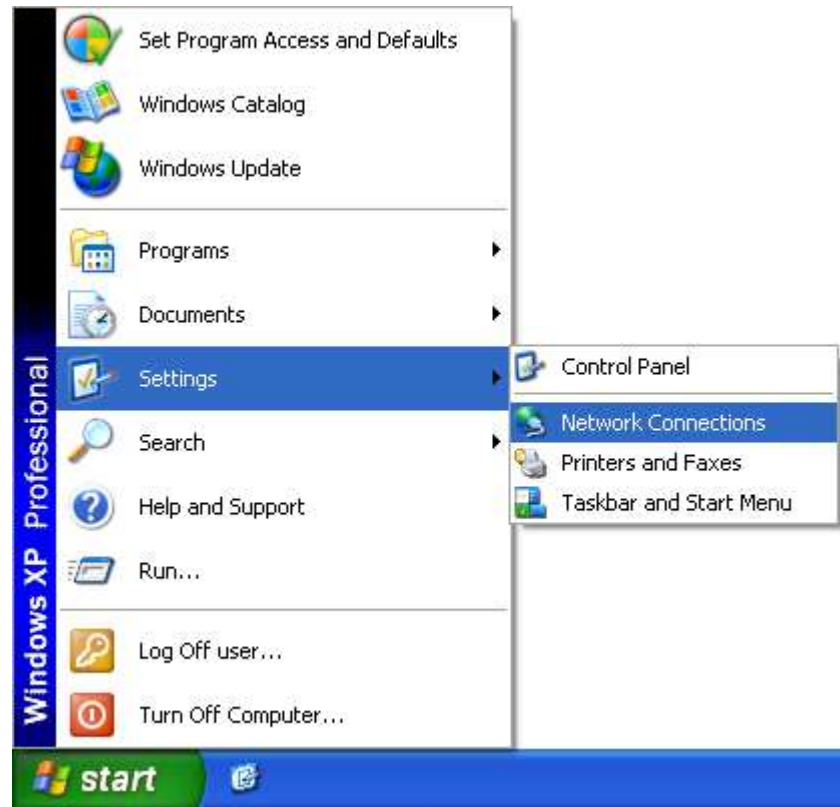


Microsoft

- Who's running XP
- Who's running Vista
- Who's running 7
- Who's already running 8

- This new version of Windows is going to be a disaster, pundits say. It will be completely rejected by businesses, who will stick with old versions even after Microsoft drops support for them.
- And its new interface is so hideous and unusable that customers who are forced to use it will trip over themselves finding ways to restore the old Start menu.

- I am, of course, talking about Windows XP, which was released more than 11 years ago. It lived down to all those insults and dire predictions for years before it finally and implausibly became a success.
- <http://www.zdnet.com/windows-8-is-the-new-xp-7000006095/>





	Windows RT	Windows 8	Windows 8 Pro
Great built-in apps like Mail, Calendar, Messaging, Photos, and SkyDrive, with many more available from the Windows Store .	■	■	■
Includes Internet Explorer 10 for fast, intuitive browsing.	■	■	■
Keeps you up to date and more secure with Windows Defender, Windows Firewall, and Windows Update.	■	■	■
Runs programs you used with previous versions of Windows. ***		■	■
Provides enhanced data protection using BitLocker technology to help keep your information secure. ****	■		■
Comes with Office Home & Student 2013 RT Preview preinstalled so you can do more out of the box. *****	■		
Enables you to connect to your PC when you're on the go with Remote Desktop Connection.			■
Connects to your corporate or school network with Domain join.			■

- Processor: 1 gigahertz (GHz) or faster with support for PAE, NX, and SSE2
- RAM: 1 gigabyte (GB) (32-bit) or 2 GB (64-bit)
- Hard disk space: 16 GB (32-bit) or 20 GB (64-bit)
- Graphics card: Microsoft DirectX 9 graphics device with WDDM driver
- <http://windows.microsoft.com/en-US/windows-8/system-requirements>

- To access the Windows Store and to download and run apps, you need an active Internet connection and a screen resolution of at least 1024 x 768
- To snap apps, you need a screen resolution of at least 1366 x 768
- Watching DVDs requires separate playback software
- <http://windows.microsoft.com/en-US/windows/dvd-playback-help>
- Windows Media Center license sold separately
- <http://windows.microsoft.com/en-US/windows-8/feature-packs>

- Win+C – Charms Bar
- Win+F – Search Files
- Win+W – Search Settings
- Win+D - Desktop
- Win+E - Explorer
- Win+R - Run
- Win+Plus or Win+Minus - Magnifier/Zoom In and Out
- Win+Print Screen – Print Screen to the Pictures Folder
- Alt+Tab - Switch between Apps
- Win+Tab - Switch between Full Screen Apps
- Win+I – Settings in the Charms Bar
- Win+X – Admin Tools



- Charms Bar
- Organize Start Screen
- Sync Settings
- App Docking